

**Product Data – Turning Rolls****Preston-Eastin Model TDRA-120 HD, TIRA-120 HD****Capacity**

- Weight: 120,000 pounds driver, 120,000 pounds idler
- Turning: 360,000 pounds
- Tractive: 24,300 pounds
- Work piece diameter: 8 inches to 16 feet

**Frame**

- Material: Welded steel channel
- Precision: Jig-drilled roller mounting holes
- Adjustability: Six center distance settings
- Features: Adjustable roller base position
- Constant centerline option: Available

**Drive**

- Wheel speed: 1.4 to 42 inches per minute
- Motor: 5 HP inverter duty AC
- Motor control: Variable frequency drive

**Drive train:**

- Gearboxes: Welded steel, worm drive
- Worm: Hardened steel
- Worm gear: 90,000 psi aluminum bronze
- Pillow blocks: Welded steel, tapered roller bearings
- Drive shaft: Tubular steel

**Wheels**

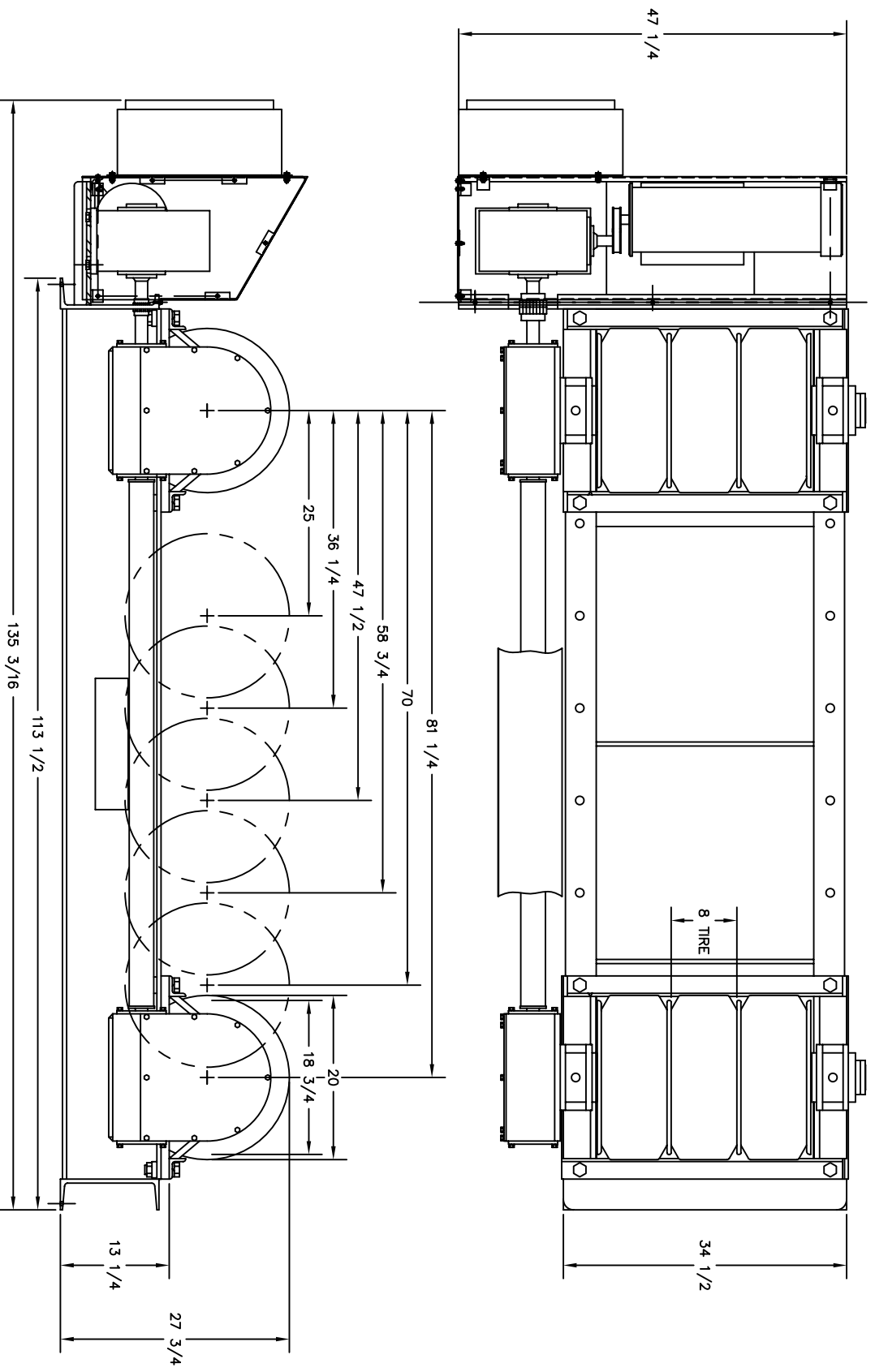
- Tires: 3/axle, 20" X 8" solid rubber, 85 durometer min.
- Backup discs: 4 steel discs per axle
- Optional wheels: Steel, urethane or phenolic

**Control**

- Pendant: Remote pendant with 30-foot cable
- Optional cable lengths: Available
- Speed control: One-turn potentiometer
- Directional control: Three position selector switch
- Rapid traverse: Two position selector switch
- Power: 240 OR 480V, three phase, 60 hz

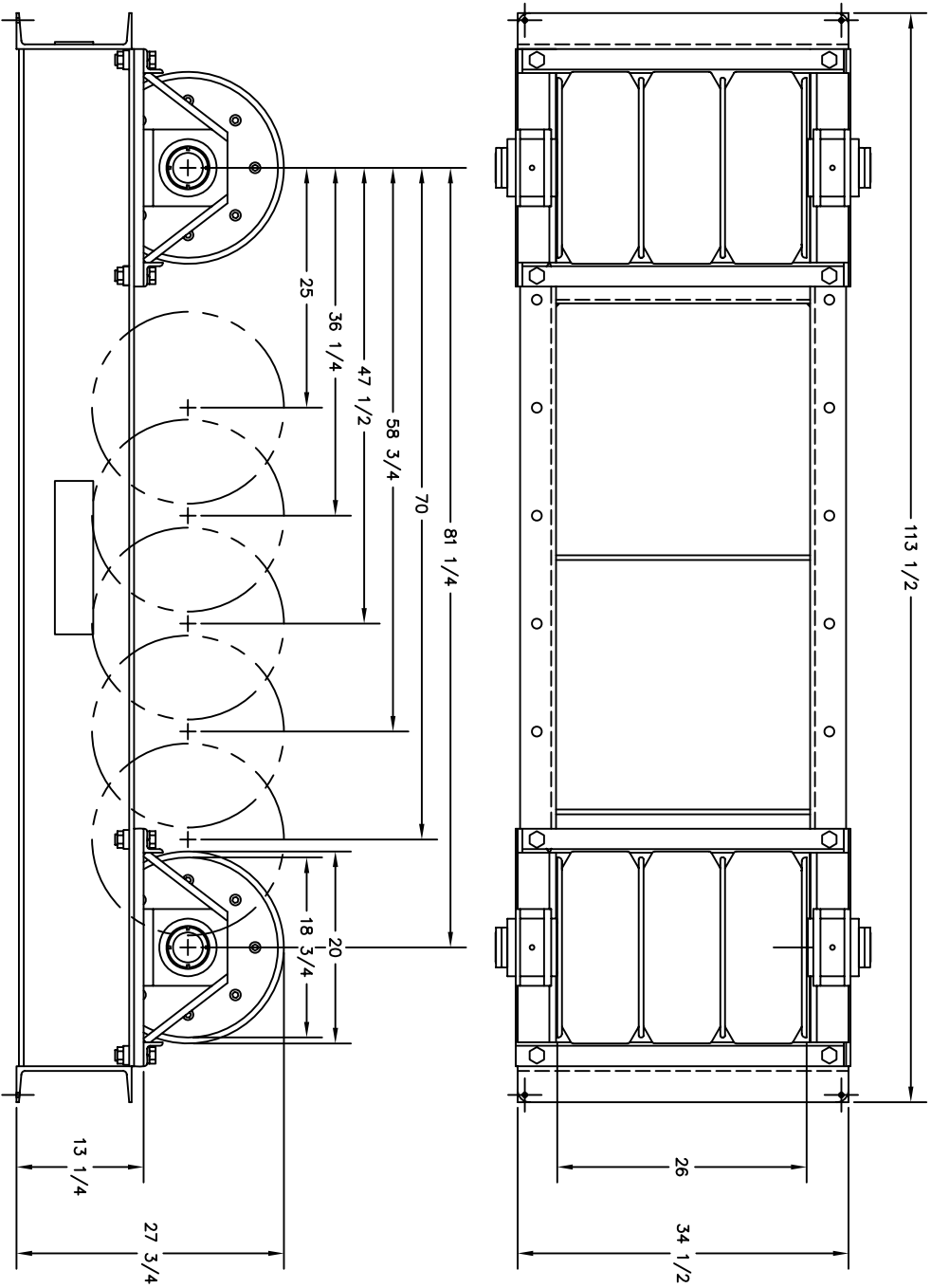
**Weight**

- Driver: 4400 pounds
- Idler: 3500 pounds



WEIGHT: 4,800 LBS

<b>PRESTON-EASTIN INC.</b> OKLAHOMA		<b>30175</b>	
MODEL TDRB-120	DATE 8-16-78	REV. NO. 1 OF 1	SCALE 1/8" = 1"
DRAWN BY B.J.K.	CHECKED BY M.B.A.	DIMENSIONAL OUTLINE	
<small>THIS DRAWING AND THE DESIGNS HEREIN ARE THE PROPERTY OF PRESTON-EASTIN INC. REPRODUCTION AND/OR USE WITHOUT WRITTEN PERMISSION IS PROHIBITED.</small>			



WEIGHT: 3,600 LBS

<p><b>PRESTON-EASTIN INC.</b> OKLAHOMA</p>		<p><b>DIMENSIONAL OUTLINE</b> TIRB-120</p>	
<p>DATE: 8-16-78 DRAWN BY: B.J.K. REV: 10-08-97</p>	<p>DESIGN: MBA REV: 30187</p>	<p>SCALE: 1 OF 1</p>	<p>NO. OF SHEETS: 1</p>
<p><small>THIS DRAWING AND THE DESIGNS HEREIN ARE THE PROPERTY OF PRESTON-EASTIN INC. REPRODUCTION AND/OR USE WITHOUT WRITTEN PERMISSION IS PROHIBITED.</small></p>			