

Product Data – Turning Rolls**Preston-Eastin Model TDRA-10 HD, TIRA-10 HD****Capacity**

- Weight: 10,000 pounds driver, 10,000 pounds idler
- Turning: 30,000 pounds
- Tractive: 3400 pounds
- Work piece diameter: 6 inches to 12 feet

Frame

- Material: Welded steel channel
- Precision: Jig-drilled roller mounting holes
- Adjustability: Four center distance settings
- Features: Adjustable roller base position
- Constant centerline option: Available

Drive

- Wheel speed: 1.5 to 45 inches per minute
- Motor: 3/4 HP variable speed DC
- Motor control: Solid-state with dynamic braking

Drive train:

- Gearboxes: Welded steel, worm drive
- Worm: Hardened steel
- Worm gear: 90,000 psi aluminum bronze
- Pillow blocks: Welded steel, tapered roller bearings
- Drive shaft: Tubular steel

Wheels

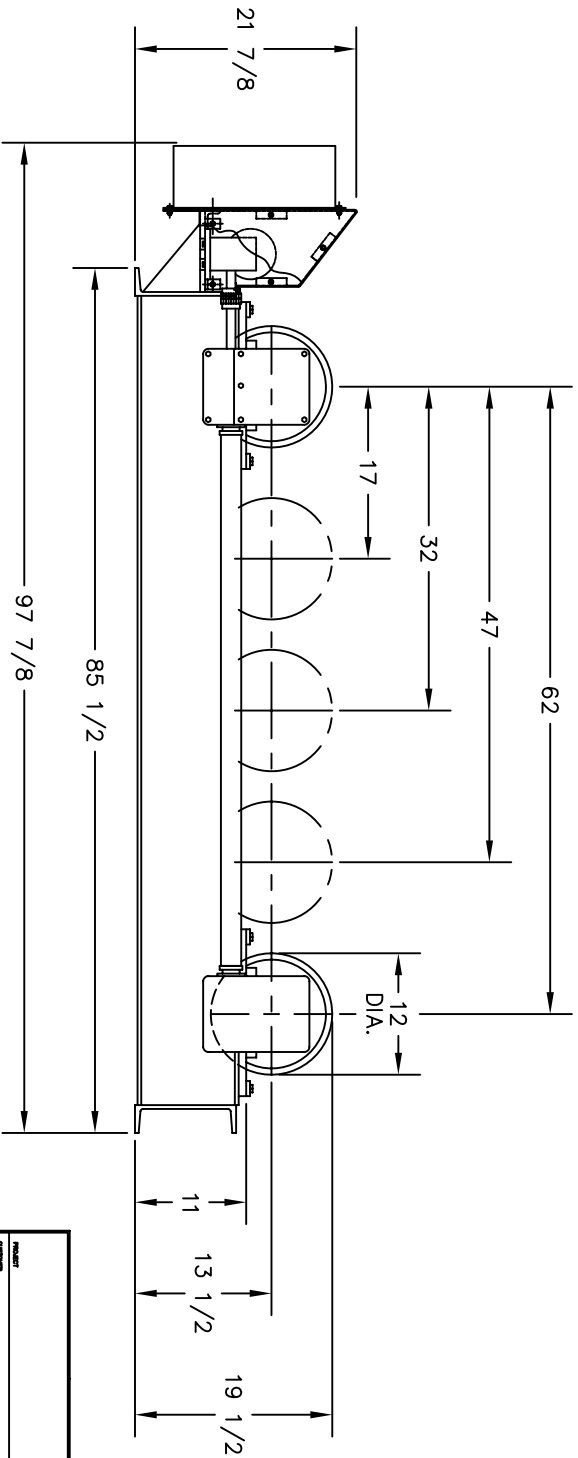
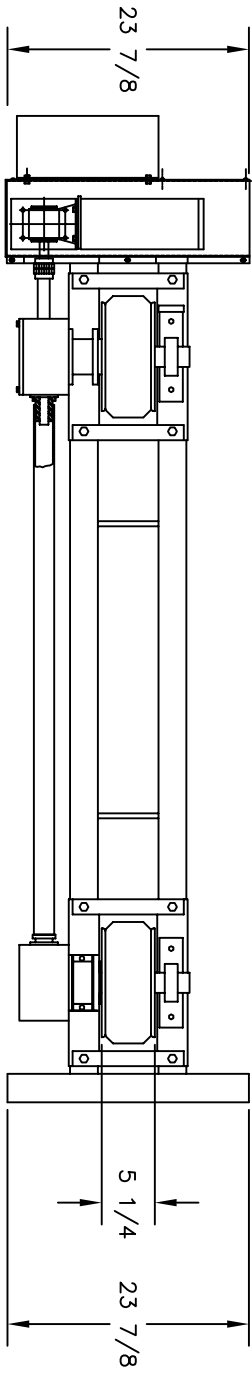
- Tires: 12" X 4-1/2" solid rubber
- Backup discs: 2 steel discs per axle
- Optional wheels: Steel, urethane or phenolic

Control

- Pendant: Remote pendant with 30-foot cable
- Optional cable lengths: Available
- Speed control: One-turn potentiometer
- Directional control: Three position selector switch
- Rapid traverse: Two position selector switch
- Power: 115V, single phase

Weight

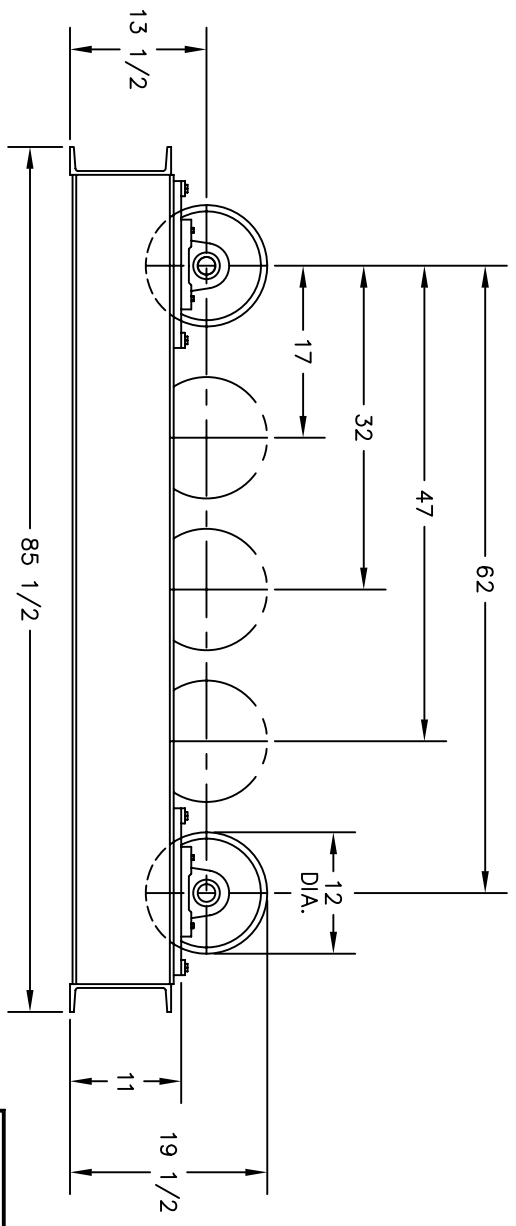
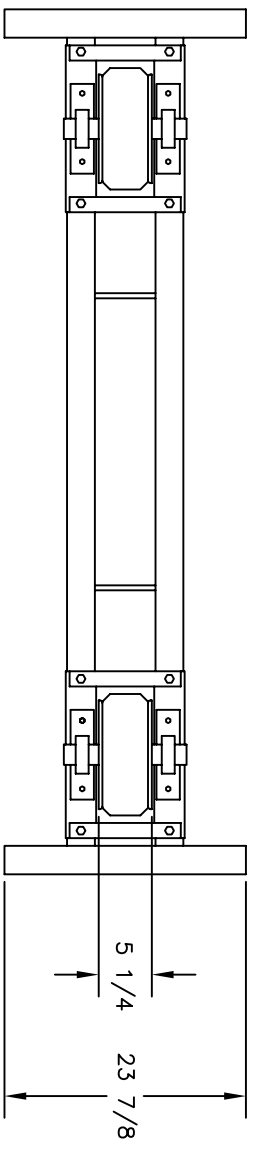
- Driver: 1100 pounds
- Idler: 650 pounds



DIMENSIONAL OUTLINE

		TITLE TDR-10
DRAWN BY B. COOK	CHECKED BY B.J.K.	PART NO. 30038
DATE 10-4-81	DATE 4-22-89	REV. NO. 1
TULSA	OKLAHOMA	PREPARED BY B. COOK

THIS DRAWING AND THE DESIGNS HEREIN ARE THE PROPERTY OF PRESTON-EASTON INC. REPRODUCTION AND/OR USE WITHOUT WRITTEN PERMISSION IS PROHIBITED.



<p>PRESTON-EASTON INC. OKLAHOMA</p>		<p>TULSA</p>	
<p>THIS DRAWING AND THE DESIGNS HEREIN ARE THE PROPERTY OF PRESTON-EASTON INC. REPRODUCTION AND/OR USE WITHOUT WRITTEN PERMISSION IS PROHIBITED.</p>			
<p>PROJECT:</p>		<p>30035</p>	
<p>DATE:</p>		<p>10-4-91</p>	
<p>DESIGNER:</p>		<p>B.J.K.</p>	
<p>DATE:</p>		<p>4-22-99</p>	
<p>FILE:</p>		<p>TIRA-10</p>	
<p>DIMENSIONAL OUTLINE</p>			