

PANDJIRIS, INC

5151 Northrup • St. Louis, MO 63110 • (314) 776-6893

PIPER 3 TURNING ROLL

The **Model Piper 3 Power Roll** has a capacity of 6,000 lbs. turning and 2,000 lbs. weight capacity. An electronic variable speed drive allows a welding speed of 2 to 60.0 IPM with a field changeable plug-in hand pendant. This includes "Forward-Stop-Reverse-Weld/Rapid" buttons and a speed adjustment potentiometer on 25' of cable to handle workpieces from 3-1/2" to 40" diameter. The standard electricals are 115 volts, single phase, 60 cycle, draws 6 amps. Wired to conform to the National Electrical Code Standards.

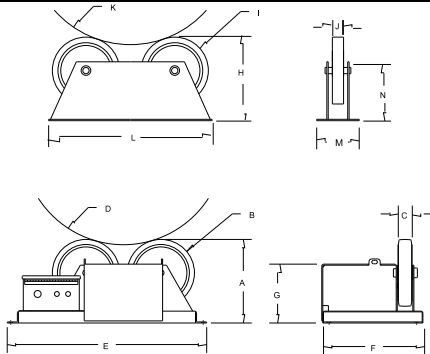
- Turning Capacity 6,000 lbs.
- Tractive Effort 277 lbs
- Load Capacity 2,000 lbs.
- Pipe Diameter Range 3-1/2" thru 40"
- Speed Range 3.3 to 66 IPM
- Motor Horse Power Rating 1/4 HP
- Wheel Diameter 12"
- Combined Wheel Face 2-1/2"

The **Piper 3 Idler Roll** has 2,000 lbs. support capacity.

- Weight Capacity of Piper 3 Idler Roll 2,000 lbs
- Weight Capacity of (1) Piper 3 Power Roll with (1) Piper 3 Idler Roll 4,000 lbs
- Weight Capacity of (1) Piper 3 Power Roll with (2) Piper 3 Idler Roll 6,000 lbs

POWER ROLL		
A	Wheel Height	15"
B	Wheel Diameter	12"
C	Wheel Face	2-1/2"
D	Pipe Diameter Range	3-1/2" - 40"
E	Frame Length	35-5/8"
F	Frame Width	18-1/16"
G	Frame Height	10-9/16"

IDLER ROLL		
H	Wheel Height	15"
I	Wheel Diameter	12"
J	Wheel Face	2-1/2"
K	Pipe Diameter Range	3-1/2" - 40"
L	Frame Length	27-3/4"
M	Frame Width	6"
N	Frame Height	15"



Terms: Pandjiris, Inc. standard terms and conditions apply, f.o.b. Factory, St. Louis, Missouri, or designated ship point.

Delivery: Consult Factory
 Approximate shipping weight:
 Power Roll 230 lbs.
 Idler Roll 100 lbs.

RICE LIST	
For Bulletin No.	: 51566-A/493
Effective Date	: July 1, 2000
Page Number	: C-3

PANDJIRIS, INC

5151 Northrup • St. Louis, MO 63110 • (314) 776-6893

PIPER 3 TURNING ROLL Optional Accessories

For foot switch with compatible plug for Forward/Stop/Reverse
(speed potentiometer on hand pendant)

For foot switch, Fast-Slow with compatible plug

For preset digital tachometer with compatible plug reads
speed in IPM or CmPM

Hold-down for 3-1/2" to 36" diameters

For less than 3-1/2" dia. workpiece, SD-3P adapter to power unit

For less than 3-1/2" dia. workpiece, SD-3I adapter to idler

For less than 3-1/2" dia. workpiece, SD-3P-HD adapter to power unit with hold-down

For 25' Extension Cable with compatible plugs for standard
pendants and accessories

For special voltages

PRICE LIST

For Bulletin No. : 51566-A/493
Effective Date : July 1, 2000
Page Number : C-4