

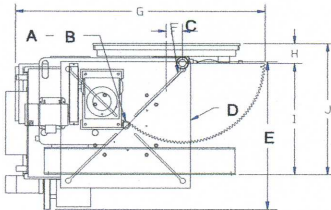
# PANDJIRIS, INC

5151 Northrup • St. Louis, MO 63110 • (314) 776-6893

## 6,000 LB. CAPACITY WELDING POSITIONER (MODEL 60-12)

The **Model 60-12 MVRMTAB Positioner** has a motorized variable speed rotation with Forward-Stop-Reverse switch and dynamic braking. The rotation speed is variable from 0.04 to .80 RPM with motorized tilt infinitely variable through 135 degrees. A 48" square table with adjustable height to allow full tilting capability is standard. All wiring conforms to National Electrical Code Standards. The positioner operates on 230/460 volt, three phase, 60 cycle input power, draws 27 Amps at 230V. When ordering specify 230 or 460 volts. A field changeable plug-in hand pendant includes "Forward-Stop-Reverse-Weld/Rapid" buttons and a speed adjustment potentiometer on 25' of cable as standard.

Load capacity ..... 6,000 lb. 12 inch overhung from face of table, 12 inch eccentricity.  
 Rotational motor size ..... 2 H.P. motor.  
 Rotation speed ..... Variable from .04 to .80 RPM.  
 Rotation torque ..... 72,000 inch pounds.  
 Swing radius ..... 38-3/4" to 60-3/4" @ 90° tilt.  
 Tilt range ..... 0 through 135 degrees, motorized.  
 Tilt motor size ..... 2 H.P. AC Brakemotor.  
 Tilt Speed ..... 135 degrees in 45 seconds.  
 Tilt Torque ..... 111,375 inch pounds inherent.



A	Pilot Hole	3" $\phi$ x 1/4" Deep
B	Thru Hole	2" $\phi$
C	"T" Slot Quantity	4
	ANSI Std "T" Nut size	5/8"
D	Table Size	48" sq.
E	Overall Width	57-5/8"
F	Rotation Offset	5-1/4"
G	Overall Length	81-3/4"
H	Inherent Overhang	6-9/16"
I	Tilt Axis Height	37-7/16"
J	Table Height	min 44"
	(5) Positions	max 68"

**Terms:** Pandjiris, Inc. standard terms and conditions apply, f.o.b. Factory, St. Louis, Missouri, or designated ship point.

**Delivery:** Consult Factory

Approximate shipping weight: 4,500 lbs.

### PRICE LIST

For Bulletin No. : PC 0991  
 Effective Date : May, 2005  
 Page Number : A-19