



CW-5 (CWO-1500) Circle Welder

Features:

- Welding control.
- Wire feeder with one set of drive rolls.
- P.M. motor and speed control for rotation.
- Gun and cable assembly.
- Adaptor kit with 120 VAC solenoid valve.
- 5/8" (16 mm) gas cup.
- Burnback control.
- 50 ft. (15 m) control cable.
- Quick disconnects for welding lead.
- Weld switch.
- Cold wire inch switch.
- Wire direction switch.
- Pre and post flow kit.
- Wire reel adaptor for 30 lbs. (14 kg) spools.
- Vertical and horizontal adjustment by rack and pinion.
- Rise and fall slide assembly.
- Rise and fall cam with 5" (125 mm) of movement.
- Brushes and collector rings for welding current, rated at 300 amps 100% duty cycle.

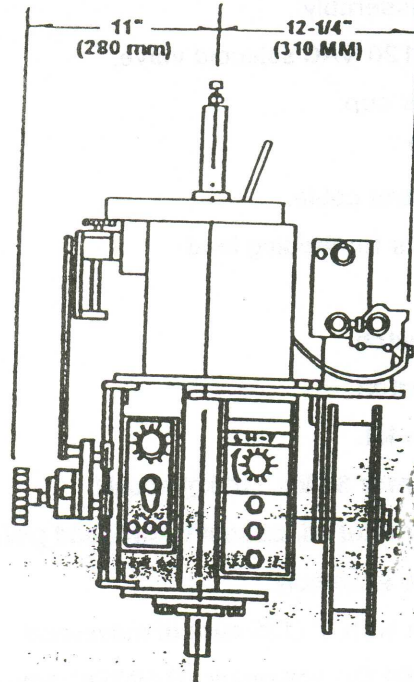
Technical Data:

Current Rating:	0-300 AMPS, 100% Duty Cycle
Input Voltage:	115 VAC (From Welder)
Wire Sizes:	.035-1/16" (0.8-1.6 mm)
Rise and Fall Cam:	5" (125 mm)
Rotation Speed:	3-130 ipm (75-3300 mm/min)
Welding Diameter:	1"-12" (25-300 mm)
Height:	29" (737 mm)
Net Weight:	135 lbs. (61 kg)

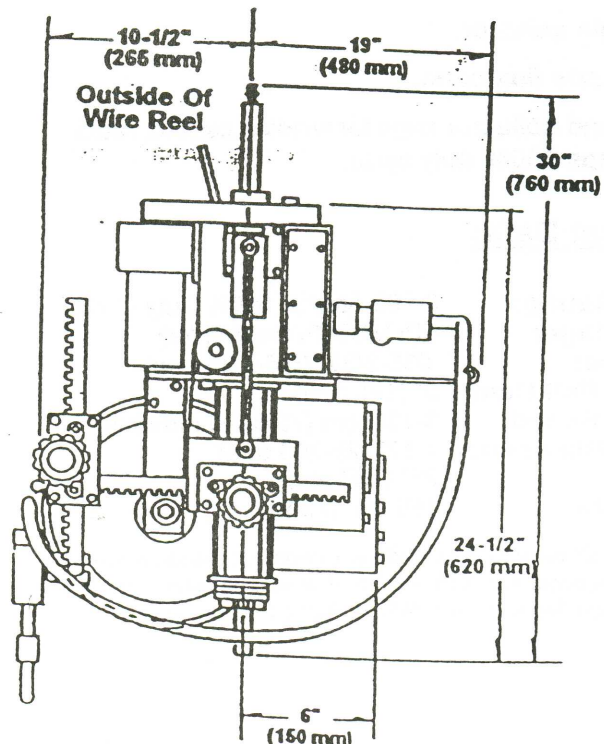
The CW-5AX may be used with any constant voltage power source with connections for 115 VAC and weld contactor. The machine may be used for sub arc, MIG or flux cored process.

- CWO-3543 Pendulum Type Oscillator
Variable Speed - Mechanical
- CWO-3442 Pendulum Type Oscillator
Electronic
- CWO-3671 Step Adaptor
1/2"-4" (13-102 mm) couplings
- CWO-4530 Model 151 Carriage Mounts on Monorail
- CWO-4540 Model 151P Carriage Mounts on Monorail

Slide and cam may be deleted for flat circular welding.
All controls may be removed with operator's pendant.
Water cooling package for water cooled gun is available.



Front Elevation



Side Elevation